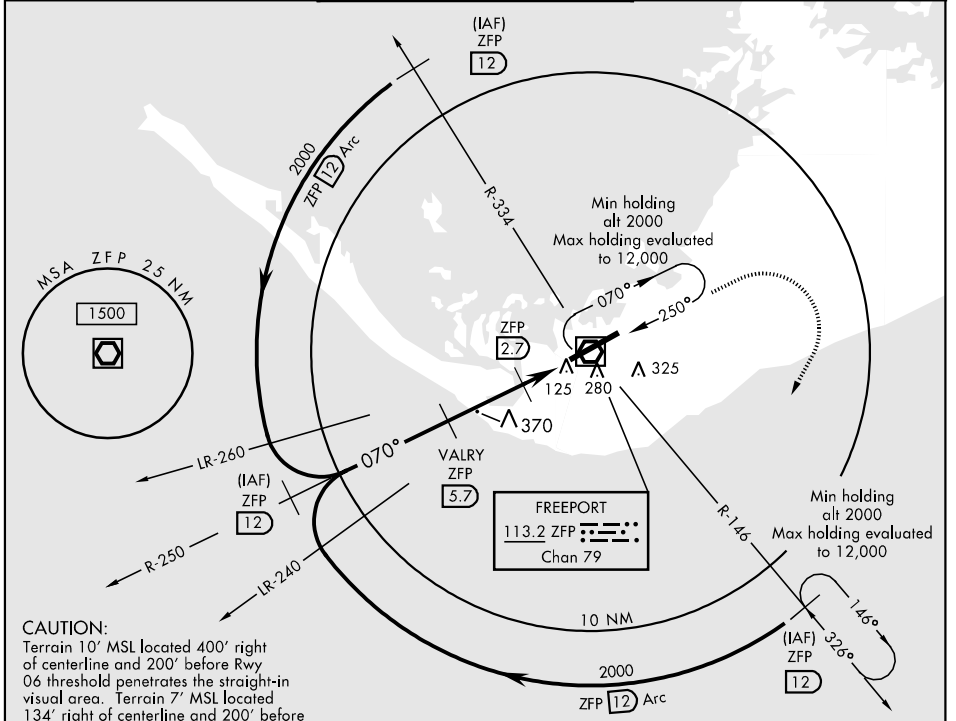


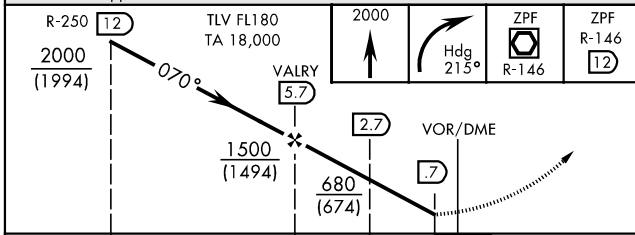
VOR/DME ZFP 113.2 Chan 79	APCH CRS 070°	Rwy Idg 11,019 TDZE Arprt Elev 7	[USAF] AL-3124 (BDCA)	GRAND BAHAMA INTL (MYGF)
---	-------------------------	--	-----------------------	--------------------------

▼ If local altimeter not available, procedure not authorized. MISSED APPROACH Climb to 2000, then right turn via 215° heading to intercept ZFP VOR R-146 to 12 DME and hold.

GRAND BAHAMA APP CON 126.5 269.4	GRAND BAHAMA TOWER 118.5 122.3	GND CON 121.7
--	--	-------------------------



CAUTION:
Terrain 10' MSL located 400' right of centerline and 200' before Rwy 06 threshold penetrates the straight-in visual area. Terrain 7' MSL located 134' right of centerline and 200' before Rwy 24 threshold penetrates the circling area.
USAF: Straight-in to Rwy 06 and circling to Rwy 24 at night requires Major Command Approval.



CATEGORY	A	B	C	D
S-6	480-1	474 (500-1)	480-1¼ 474 (500-1¼)	480-1½ 474 (500-1½)
CIRCLING	620-1	613 (700-1)	640-1¾ 633 (700-1¾)	640-2 633 (700-2)

